



A3D - 002 - White Vapor Smoothed PA-12

Subject: Speckling Issue with White Vapor Smoothed Parts

Dear Valued Customer,

We hope this message finds you well. We are reaching out to bring to your attention a prevalent issue concerning White Vapor Smoothed parts, an industrial problem commonly referred to as "Speckling" or "Robin Egging".

In the process of vapor smoothing, there is a possibility that visual dots, or "speckles", can be brought to the surface of the finished part. This occurrence is an industry-wide issue and has been acknowledged by our printer manufacturers. They have launched a dedicated task force to investigate the root cause of the problem and are actively working towards a resolution.

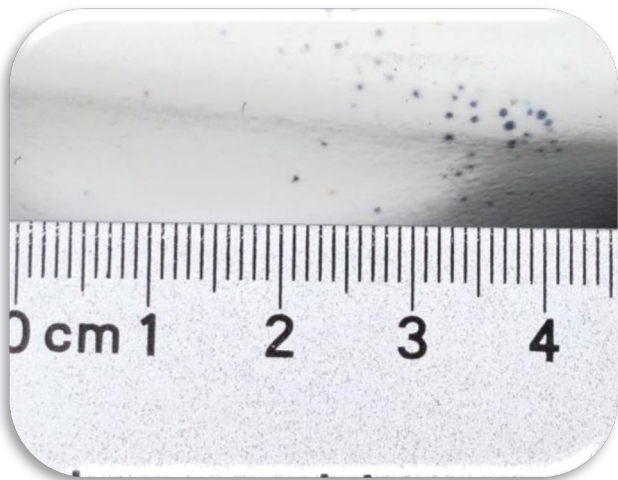
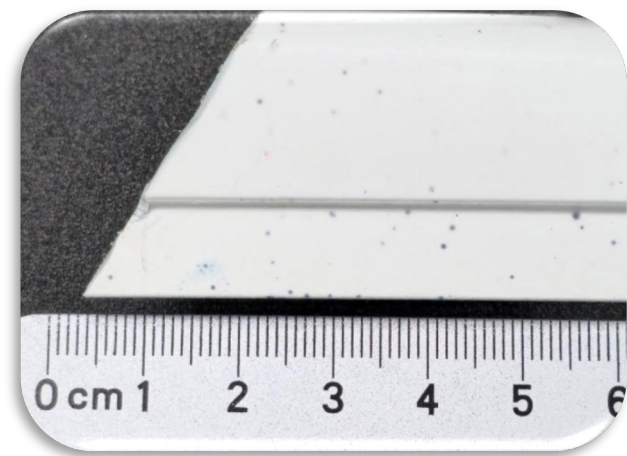
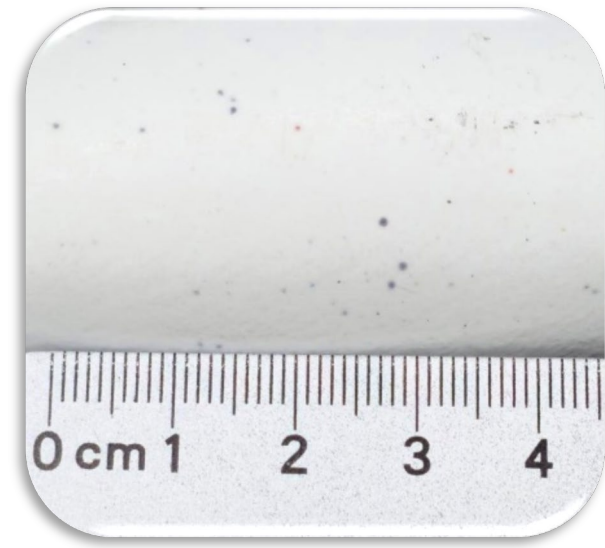
Until a solution has been identified and implemented, we recommend that if a perfect, uniform white finish is required for your projects, please consider ordering an overage of 10-25% of the required quantities to allow for any parts affected by the speckling. This overage should help mitigate the impact of the speckling issue on your project completion and product quality.

Please note the following:

1. **Acknowledgment of Issue:** By continuing to place orders for White Vapor Smoothed parts, you acknowledge and accept the potential for the speckling issue and agree to the suggested solution.
2. **Liability:** A3D shall not be held liable for any inconsistencies or visual defects caused by the speckling phenomenon.
3. **Future Updates:** We will strive to keep you updated on any progress or updates regarding this issue from the printer manufacturers.

Should you have any questions or concerns regarding this notice, please feel free to contact us directly. We are committed to supporting you and ensuring the highest possible level of customer satisfaction.

Thank you for your understanding and cooperation.



VAPORSMOOTHED WHITE ROBBIN EGGING

Parts printed in white via SLS or MJF could be subjected to a visual condition during vapor smoothing. You will notice that the severity of this issue, known unofficially as "Robin Egging," is depicted from top to bottom in ascending order of severity.

Please be aware that this is not a problem unique to our service but rather an industry-wide concern. As such, machine OEMs have organized a dedicated task force to unearth and address the root cause of this issue. It is their collective effort that promises a solution soon.

In the interim, we recommend that if you require a perfectly white surface finish, you consider ordering an additional 10-25% of parts to ensure you achieve the desired results. This is merely a precautionary measure to accommodate the unpredictability of the Robin Egging effect. We wish to assure our customers that all parts produced, irrespective of the quantity, will be delivered.

We appreciate your understanding and patience as we, along with the wider industry, work diligently to rectify this matter.